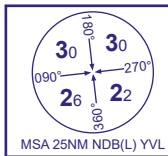


INSTRUMENT APPROACH CHART - ICAO

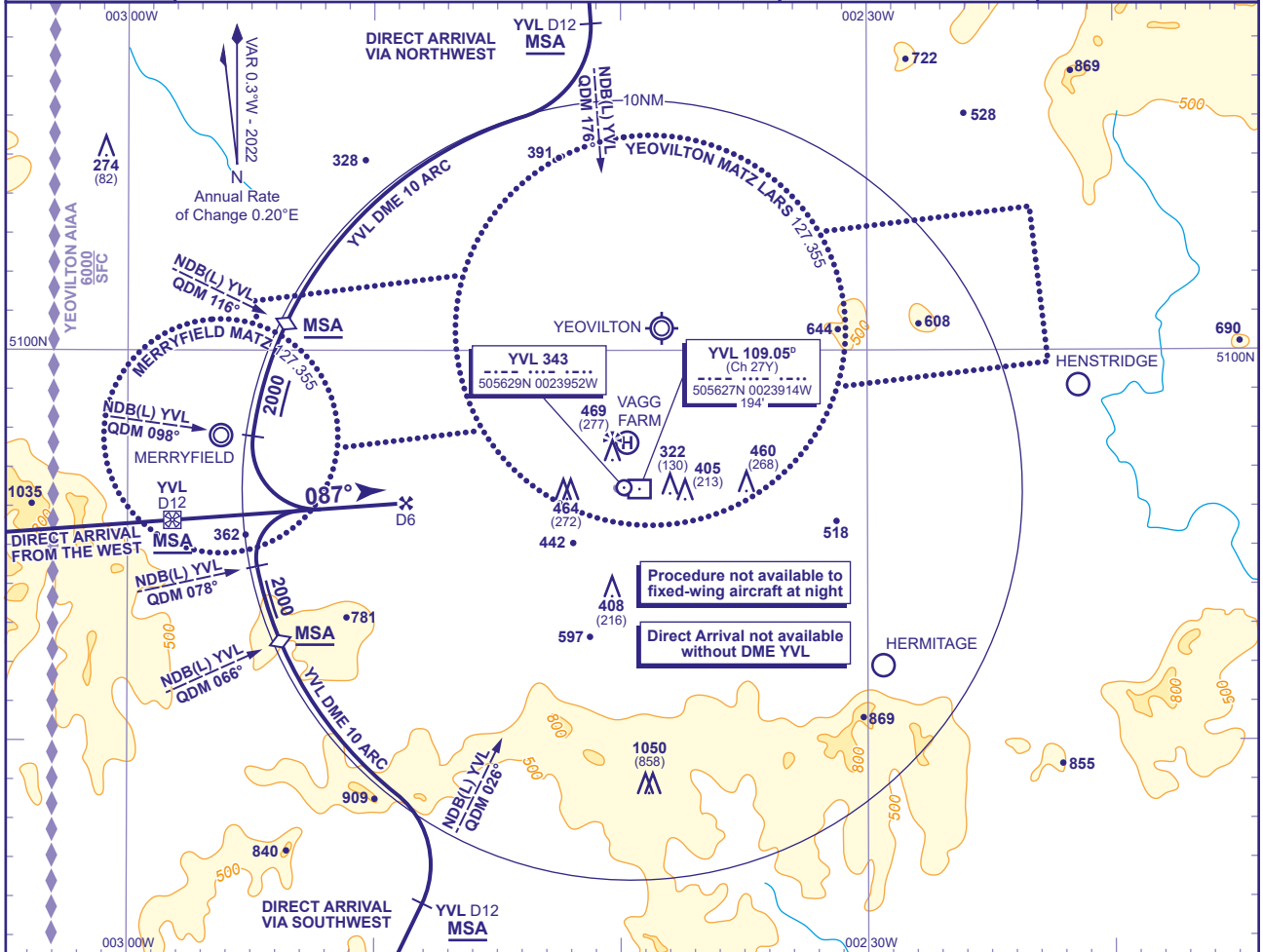
YEOVIL/WESTLAND

Direct Arrivals  
to NDB(L)/DME  
RWY 09  
(ACFT CAT A,B)



APP	130.805	WESTLAND APPROACH	AD ELEVATION	202
TWR	125.405	WESTLAND TOWER	THR ELEVATION	192
			OBSTACLE ELEVATION	1050 AMSL (858) (ABOVE THR)
			BEARINGS ARE MAGNETIC	

TRANSITION ALTITUDE  
3000



**DIRECT ARRIVAL FROM THE WEST (Subject to ATC approval from Yeovil Radar)**  
Arrival **not below MSA** to intercept and establish on extended FAT. After passing IAF (NDB(L) YVL QDM 087° YVL DME 12) descend to cross FAF (DME 6) at **2000**(1808) then continue as for main procedure.

**DIRECT ARRIVAL FROM THE NORTHWEST (Subject to ATC approval from Yeovil Radar)**  
Track towards NDB(L) YVL, **not below MSA**, NDB(L) YVL QDM 176° and 116°. At YVL DME 12 turn right and establish on the YVL DME 10 arc. After passing NDB(L) YVL QDM 116° descend to **not below 2000**. At NDB(L) YVL QDM 098° turn left to establish on extended FAT. When established on the extended FAT, continue as for main procedure.

**DIRECT ARRIVAL FROM THE SOUTHWEST (Subject to ATC approval from Yeovil Radar)**  
Track towards NDB(L) YVL, **not below MSA**, NDB(L) YVL QDM 026° and 066°. At YVL DME 12 turn left and establish on the YVL DME 10 arc. After passing NDB(L) YVL QDM 066° descend to **not below 2000**. At NDB(L) YVL QDM 078° turn right to establish on extended FAT. When established on the extended FAT, continue as for main procedure.

CHANGE (9/25): YEOVILTON RADAR FREQUENCY REVISED.